

Action Steps in Addressing Social Determinants of Health

Resources from the June 10, 2025 EBP Summit Presentation

Introduction of SDOH

<https://www.cdc.gov/about/priorities/why-is-addressing-sdoh-important.html>

Bay Area Regional Health Inequities Initiative Framework

<https://barhii.org/framework>

Identification of Need

Neighborhood & Built Environment

- Walkability: <https://www.walkscore.com/cities-and-neighborhoods/>
- Crime Rates: <https://crimegrade.org/safest-places-in-iowa/>
- Housing: <https://dashboards.mysidewalk.com/iowa-housing-and-community-needs-dashboard-2030-5562-b91f79645bc0/state-forecast>
 - Iowa Homelessness Needs Assessment: <https://opportunityiowa.gov/media/5390/download?inline=>
- Environmental Safety: <https://data.iowa.gov/browse?category=Environmental+Assessment&sortBy=relevance&pageSize=20>
- Access to Green Spaces: <https://data.iowa.gov/browse?category=Outdoor+Recreation&sortBy=relevance&pageSize=20>
- Transportation: <https://data.iowa.gov/browse?category=Transportation&sortBy=relevance&page=1&pageSize=20>

Healthcare Access & Quality

- Hospitals: <https://www.ahd.com/>
- Health Statistics: <https://hhs.iowa.gov/health-statistics>
- Health Facility Reports: <https://dia-hfd.iowa.gov/Home/PublicReports>
- Center for Disease Control and Prevention: <https://www.cdc.gov/nchs/index.html>
- National Institutes of Health: <https://datascience.nih.gov/>
- National Institute of Mental Health: <https://nda.nih.gov/>

Economic Stability

- Iowa Workforce Needs Assessment: <https://workforce.iowa.gov/labor-market-information/industry-employers/workforce-needs-assessment>
- Active Iowa Business Entities: <https://data.iowa.gov/stories/s/agg2-bq83>
- Commerce: <https://data.iowa.gov/browse?category=Communities+%26+Commerce&sortBy=relevance&page=1&pageSize=20>
- State Expenditures: <https://checkbook.iowa.gov/#!/year/2024/>
- Employment: <https://www.bls.gov/cps/data.htm/data.htm>

- Iowa: <https://www.bls.gov/regions/midwest/iowa.htm>

Education Access & Quality

- PK-12 Education Statistics: <https://educate.iowa.gov/pk-12/data/education-statistics>
- School Performance Profiles: <https://www.iaschoolperformance.gov/ECP/Home/Index>
- Education: <https://data.iowa.gov/browse?category=Education&sortBy=relevance&page=1&pageSize=20>
- Education Statistics: <https://nces.ed.gov/ccd/>
- Special Education: <https://sites.ed.gov/idea/osep-fast-facts/>
- Nation's Report Card: https://www.nationsreportcard.gov/profiles/stateprofile/overview/IA?sfj=NP&chort=1&sub=MAT&sj=IA&st=MN&year=2024R3&cti=PgTab_OT

Social & Community Context

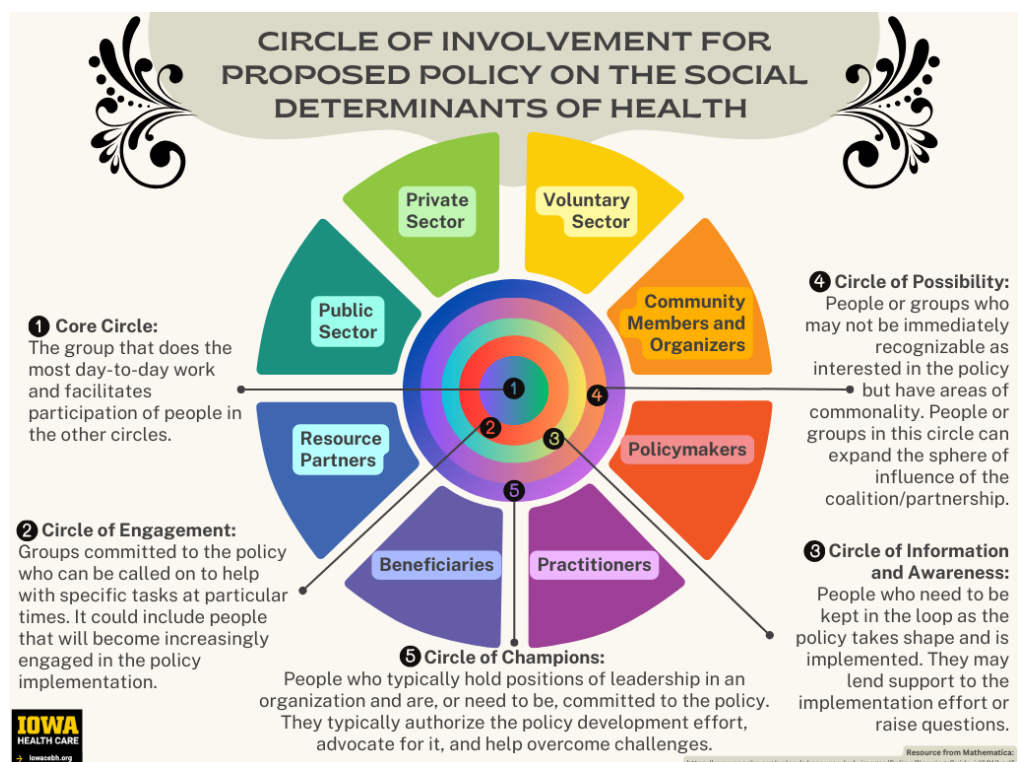
- Recidivism Rates: <https://data.iowa.gov/stories/s/mp89-ki4k>
- Suicidality Rates: https://data.idph.state.ia.us/t/IDPH-DataViz/views/SuicideV3/SuicideData?iframeSizedToWindow=true&%3Aembed=y&%3AshowAppBanner=false&%3Adisplay_count=no&%3AshowVizHome=no&%3Arender=false
- Polling Locations: <https://iowadot.maps.arcgis.com/apps/webappviewer/index.html?id=9540d5a88dc24f69bb46b439f5634bc3>
- Voting Data: <https://www.rcvresources.org/iowa-state-assessment>
- Administration for Community Living: <https://acl.gov/aging-and-disability-in-america>
- Child & Adolescent Data: <https://www.childhealthdata.org/learn-about-the-nsch/NSCH>

Action Planning & Implementation

Tearless Logic Model: <https://www.gjcpp.org/en/tool.php?issue=7&tool=9>

Enhancing Program Performance with Logic Models: <https://logicmodel.extension.wisc.edu/>

Circle of Involvement



Community-Based Interventions Examples

Neighborhood & Built Environment

- Blue Zones Project: <https://info.bluezonesproject.com/explore-iowa>
- Community Food Systems: <https://www.extension.iastate.edu/ffed/cfs>
- Broadband Equity, Access, and Deployment Program (BEAD): <https://dom.iowa.gov/broadband/bead-program>
- Hope and Opportunity in Many Environments (HOME): <https://hhs.iowa.gov/programs/welcome-iowa-medicaid/current-projects/home>

Healthcare Access & Quality

- Iowa Healthiest State Initiative: <https://www.iowahealthieststate.com/>
- Healthy Iowans: <https://hhs.iowa.gov/performance-and-reports/healthy-iowans>
- Live Healthy Iowa: <https://livehealthyiowa.org/>
- Partners in Action: <https://hhs.iowa.gov/performance-and-reports/healthy-iowans/partners-action>

Economic Stability

- UpLift – Iowa Basic Income: <https://upliftiowa.org/>
- Workforce Innovation and Opportunity Act (WIOA): <https://workforce.iowa.gov/jobs/worker-programs/wioa>
- Food Bank Iowa: <https://foodbankiowa.org/>
- Iowa Home Investment Partnerships Program American Rescue Plan (HOME-ARP): <https://opportunityiowa.gov/housing/homeless-or-risk-homelessness/iowa-home-arp-program>

Education Access & Quality

- Early ACCESS: <https://educate.iowa.gov/pk-12/early-childhood/early-access>
- Head Start: <https://www.iowaheadstart.org/>
- School-Based Health Centers: <https://www.keephealthytogether.org/>
- School Food Program: <https://hhs.iowa.gov/food-assistance/school-food>
- Farm to School & Early Care: <https://www.iowafarmtoschoolearlycare.org/>

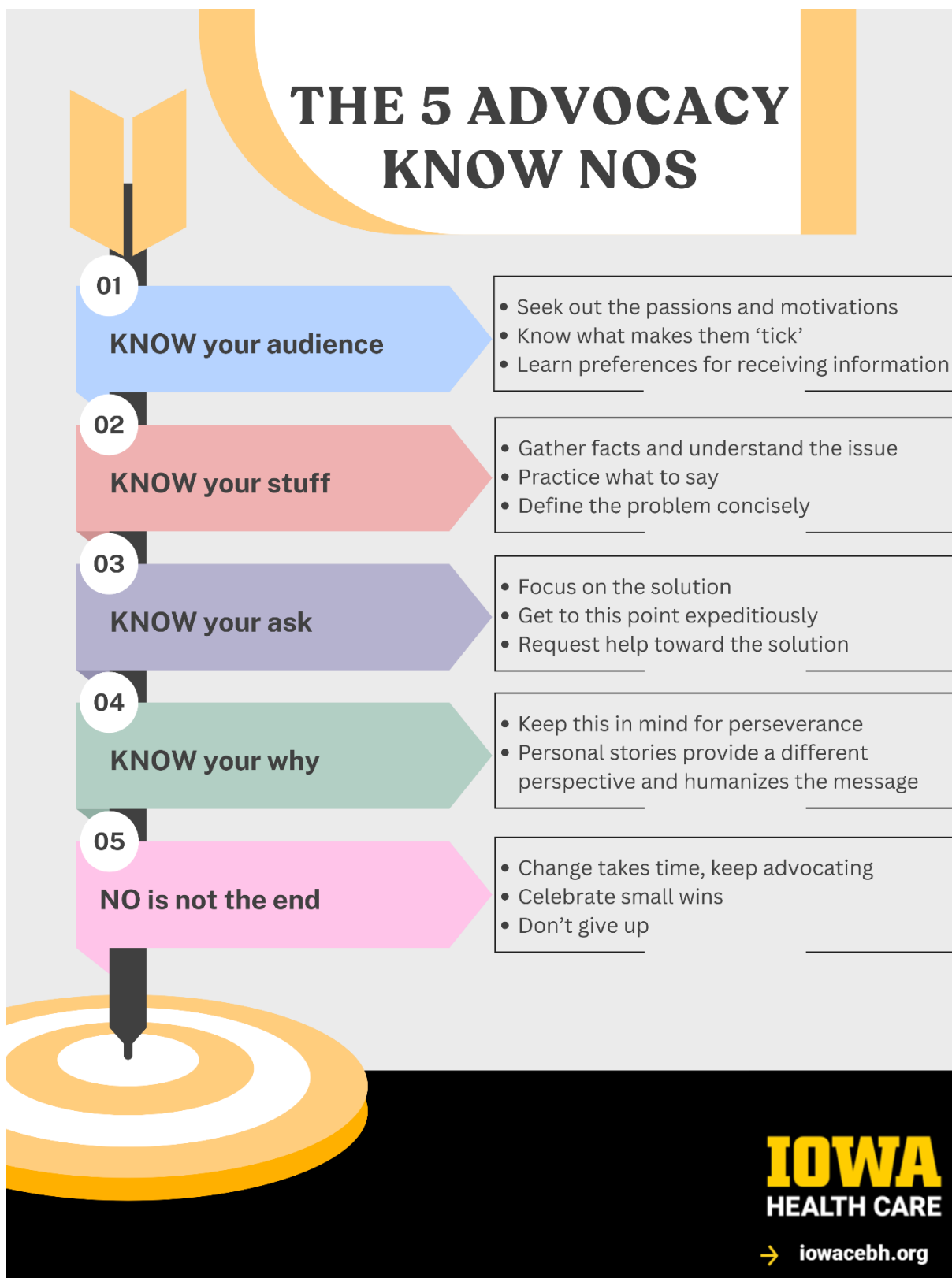
Social & Community Context

- Carrie Chapman Catt Award: <https://sos.iowa.gov/students/carrie-chapman-catt-award>
- Read to Succeed: <https://www.unitedwaydm.org/impact/initiatives/readtosucceed>
- Family Development & Self-Sufficiency (FaDSS): <https://hhs.iowa.gov/programs/programs-and-services/fadss>
- Money Follows the Person (MFP): <https://hhs.iowa.gov/programs/welcome-iowa-medicaid/iowa-medicaid-programs/mfp>

Advocacy

Iowa DD Council's Message Worksheet: <https://irp.cdn-website.com/dc8e72bb/files/uploaded/Message-Worksheet.pdf>

The 5 Advocacy Know Nos



Legislative Tracking Resources

Iowa DD Council – Bill Tracker: <https://www.iowaddcouncil.org/bill-tracker>

Find Your Iowa Legislator: <https://www.legis.iowa.gov/legislators/find>

GovTrack.us – Bill Tracker: https://www.govtrack.us/congress/bills/subjects/mental_health/6176

Find Your US Legislator: <https://www.congress.gov/members/find-your-member>

Advocacy for Social Determinants of Health

Neighborhood & Built Environment

- CSH | Housing: <https://www.csh.org/csh-solutions/policy-and-advocacy/>
- Aspen Institute | Food Access: <https://www.aspeninstitute.org/topics/food-access/>
- NAACP | Environment & Climate: <https://naacp.org/know-issues/environmental-climate-justice>
- People's Action | Infrastructure: <https://peoplesaction.org/campaigns/>
- WE ACT | Environmental Justice: <https://weact.org/>
- National Alliance to End Homelessness: <https://endhomelessness.org/our-vision/>

Healthcare Access & Quality

- AAFP | Health Equity: <https://www.aafp.org/family-physician/patient-care/the-everyone-project/advocacy-for-health-equity.html>
- PPC | Patient Advocacy: <https://www.protectcoverage.org/>
- AMA | Health Care Access: <https://www.ama-assn.org/health-care-advocacy/access-care>
- APHA | Public Health: <https://www.apha.org/policy-and-advocacy>
- ACPM | Prevention: <https://www.acpm.org/advocacy/>
- NAMI | Mental Health Care Access: <https://www.nami.org/advocacy/>

Economic Stability

- Aspen Institute | Economic Development: <https://www.aspeninstitute.org/topics/economic-development/>
- FAM | Financial Literacy: <https://financialadvocacy.org/>
- End Poverty in America: <https://endpovertyusa.org/>
- Spotlight | Poverty: <https://spotlightonpoverty.org/issues/>
- Workplace Fairness: <https://www.workplacefairness.org/>
- OFW | Minimum Wage: <https://www.onefairwage.org/>

Education Access & Quality

- The 74 | Education: <https://www.the74million.org/>
- Aurora Institute | Education Innovation: https://aurora-institute.org/resources/?_sft_issue=federal-policy
- IAAEYC | Early Education: <https://iowaaeyc.org/advocacy/>
- NEA | Public Education: <https://www.nea.org/advocating-for-change>
- IHEP | Higher Education: <https://www.ihep.org/our-work/policy-advocacy/>
- All4Ed | High School Graduation Rates: <https://all4ed.org/advocacy/>

Social & Community Context

- ICAA | Community Engagement: <https://iowacommunityaction.org/advocate/>
- PAN Foundation | Social Support Networks: <https://www.panfoundation.org/resources/community/>
- Healthy People 2030 | Social Support: <https://odphp.health.gov/healthypeople/objectives-and-data/browse-objectives/social-and-community-context>
- Advancement Project | Civil Rights: <https://advancementproject.org/our-work/>
- The Sentencing Project | Criminal Justice: <https://www.sentencingproject.org/advocacy/get-involved/>

Resources

General

- University of Kansas Community Toolbox: <https://ctb.ku.edu/en/toolkits>
- Addressing Community Social Determinants of Health: <https://ctb.ku.edu/en/table-of-contents/overview/models-for-community-health-and-development/social-determinants-of-health/main>

Needs Assessment

- Assessing Community Needs and Resources: <https://ctb.ku.edu/en/assessing-community-needs-and-resources>
- Analyzing Problems and Goals: <https://ctb.ku.edu/en/analyzing-problems-and-goals>

Cross-Sector Partnerships

- Increasing Participation: <https://ctb.ku.edu/en/increasing-participation-and-membership>
- Creating & Maintaining Partnerships: <https://ctb.ku.edu/en/creating-and-maintaining-coalitions-and-partnerships>

Community Interventions

- Developing an Intervention: <https://ctb.ku.edu/en/developing-intervention>
- Developing Strategic and Action Plans: <https://ctb.ku.edu/en/developing-strategic-and-action-plans>

Evaluation

- Evaluating the Initiative: <https://ctb.ku.edu/en/evaluating-initiative>

Policy and Advocacy

- Influencing Policy Development: <https://ctb.ku.edu/en/influencing-policy-development>
- Advocating for Change: <https://ctb.ku.edu/en/advocating-change>
- Advocacy Toolkit: <https://www.iowaddcouncil.org/advocacy-toolkit>